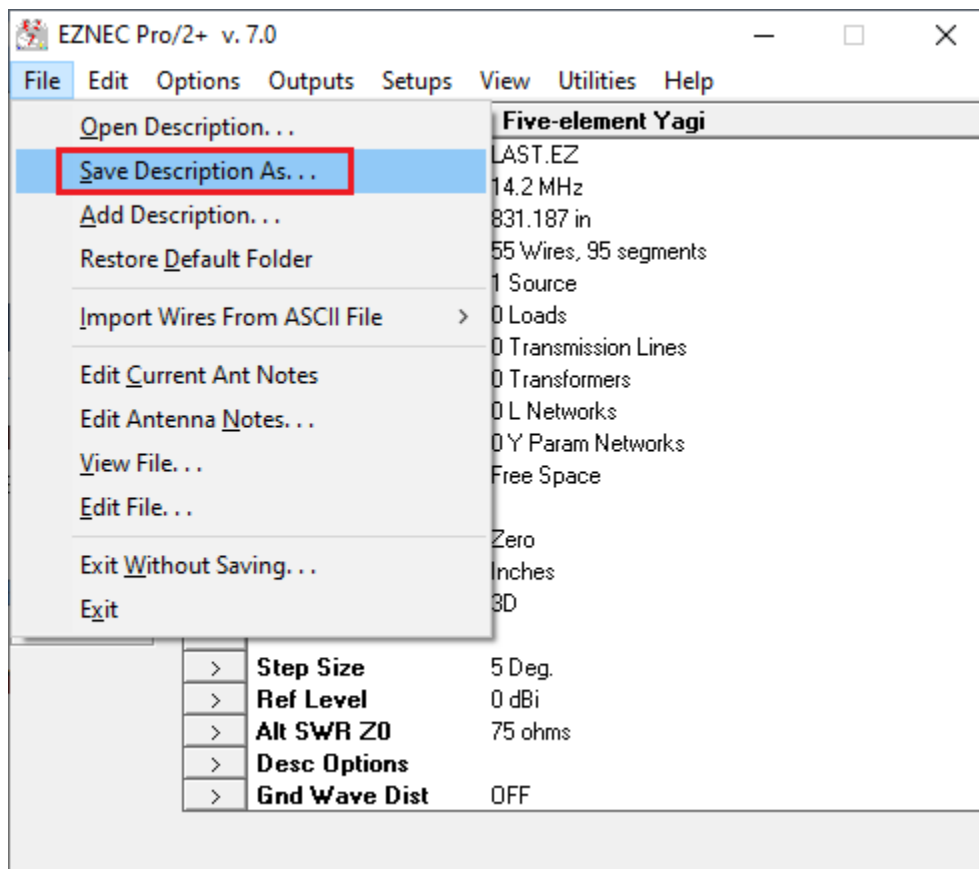


# Importing Eznec Projects into AN-SOF

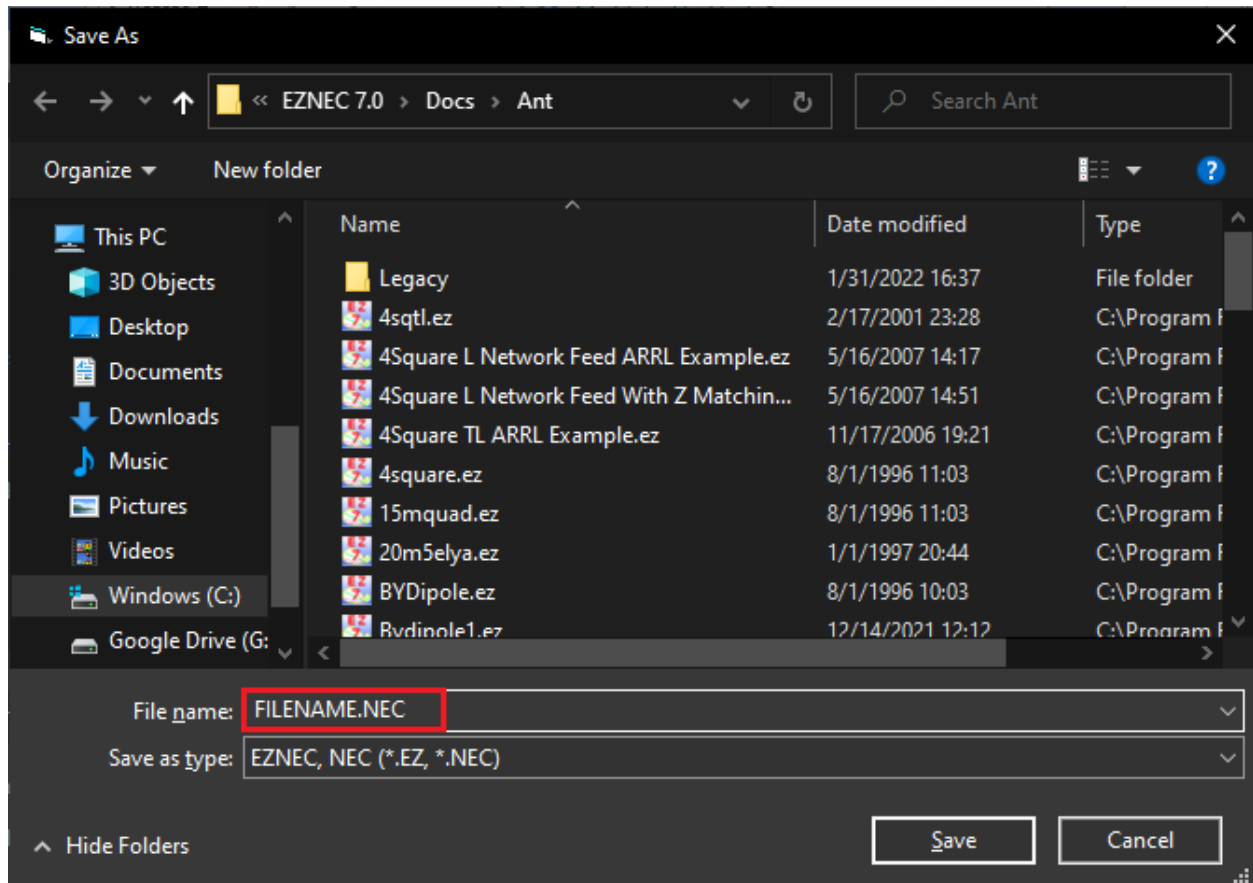
This guide explains how to export projects from Eznec in NEC format and import them into **AN-SOF Antenna Simulator**.

## I. Exporting Eznec Projects in NEC Format

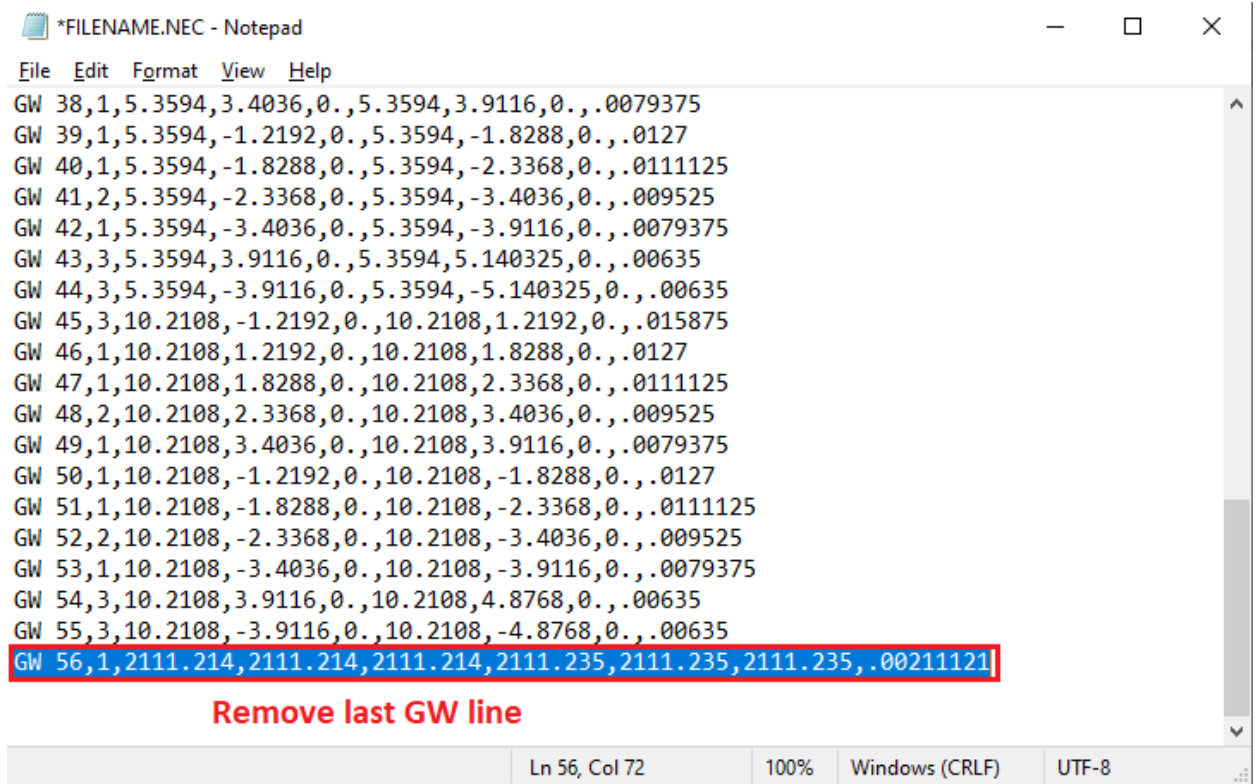
1. **Go to the Eznec File menu and select "Save Description As..."** A "Save as" window will be displayed.



2. Change the file extension to ".NEC" and modify the file name if desired. Click "Save" to save the project in NEC format.



3. **Open the saved .NEC file with a text editor and delete the last GW line.** This line is a spurious line due to a bug in Eznec and can be safely removed. Save the modified file. It is now ready to be imported into AN-SOF.



\*FILENAME.NEC - Notepad

File Edit Format View Help

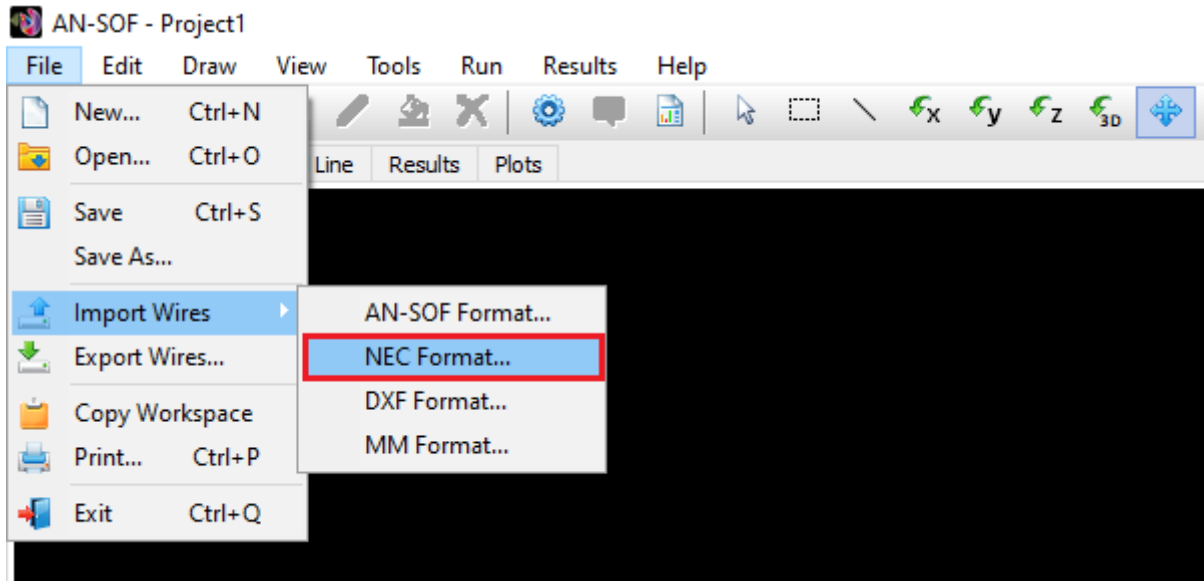
```
GW 38,1,5.3594,3.4036,0.,5.3594,3.9116,0.,.0079375
GW 39,1,5.3594,-1.2192,0.,5.3594,-1.8288,0.,.0127
GW 40,1,5.3594,-1.8288,0.,5.3594,-2.3368,0.,.0111125
GW 41,2,5.3594,-2.3368,0.,5.3594,-3.4036,0.,.009525
GW 42,1,5.3594,-3.4036,0.,5.3594,-3.9116,0.,.0079375
GW 43,3,5.3594,3.9116,0.,5.3594,5.140325,0.,.00635
GW 44,3,5.3594,-3.9116,0.,5.3594,-5.140325,0.,.00635
GW 45,3,10.2108,-1.2192,0.,10.2108,1.2192,0.,.015875
GW 46,1,10.2108,1.2192,0.,10.2108,1.8288,0.,.0127
GW 47,1,10.2108,1.8288,0.,10.2108,2.3368,0.,.0111125
GW 48,2,10.2108,2.3368,0.,10.2108,3.4036,0.,.009525
GW 49,1,10.2108,3.4036,0.,10.2108,3.9116,0.,.0079375
GW 50,1,10.2108,-1.2192,0.,10.2108,-1.8288,0.,.0127
GW 51,1,10.2108,-1.8288,0.,10.2108,-2.3368,0.,.0111125
GW 52,2,10.2108,-2.3368,0.,10.2108,-3.4036,0.,.009525
GW 53,1,10.2108,-3.4036,0.,10.2108,-3.9116,0.,.0079375
GW 54,3,10.2108,3.9116,0.,10.2108,4.8768,0.,.00635
GW 55,3,10.2108,-3.9116,0.,10.2108,-4.8768,0.,.00635
GW 56,1,2111.214,2111.214,2111.214,2111.235,2111.235,2111.235,.00211121
```

**Remove last GW line**

Ln 56, Col 72    100%    Windows (CRLF)    UTF-8

## II. Importing NEC Files into AN-SOF

1. Go to the AN-SOF File menu, select "Import Wires," and choose "NEC Format..." An "Open" window will appear.



2. Select the previously saved .NEC file and click "Open." The imported wires will be displayed in the AN-SOF workspace. The FR (frequency), GN (ground), EX (excitation), and other NEC commands will also be imported. You can find more information about supported NEC commands here:

[https://antennasimulator.com/index.php/knowledge-base/importing-wires/#articleTOC\\_2](https://antennasimulator.com/index.php/knowledge-base/importing-wires/#articleTOC_2)